

CUP MATCH

August 2 & 3



FROZEN
PORK RIBS

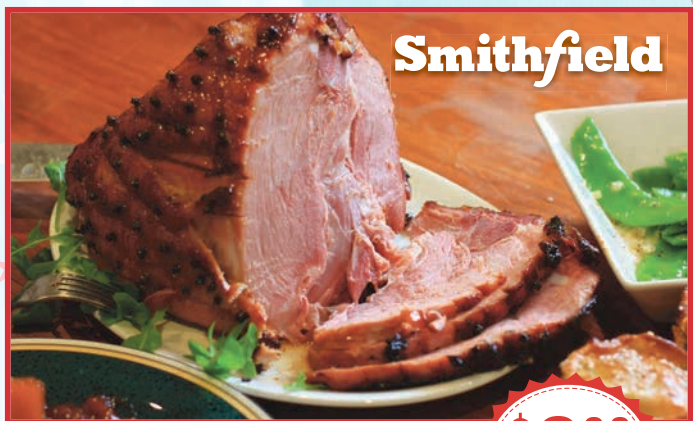
\$3.99
LB.



PRE-FROZEN

BLACK TIGER SHRIMP

\$12.99
LB.



Smithfield

**HARDWOOD SMOKED
HAM PORTIONS**

\$3.09
LB.



FROZEN

JUMBO BEEF HOT DOGS

5 LB. PKG.
\$31.99
EA.



FRESH

SALMON FILLETS

\$17.99
LB.



FROZEN

WHOLE LAMB LEGS

\$5.29
LB.



PRE-FROZEN

**SWEET OR HOT
ITALIAN SAUSAGE**

\$7.99
LB.

Sara Lee
**FRENCH CREAM
CHEESECAKES**
Strawberry - 26 oz.,
Original - 23.5 oz. **\$9.25**
ea.

Turkey Hill
ICE CREAM 48 oz. **\$6.99**
ea.

**MINI ICE
CREAM BARS**
Snickers - 12 pk.,
Twix - 12 pk., Dove - 14 pk. **\$7.23**
ea.

Pepperidge Farm
LAYER CAKES **\$6.03**
All varieties - 17 oz. ea.

Blue Bunny
BOMB POPS 12 pk. **\$5.35**
ea.

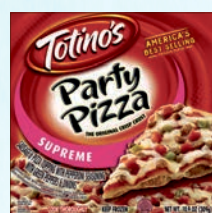
Perry's
**VANILLA
ICE CREAM SANDWICH** 6 pack **\$4.83**
ea.

Holiday Store Hours

Saturday, July 28 - 7am to 8pm
Sunday, July 29 - CLOSED
Monday, July 30 - 8am to 7pm
Tuesday, July 31 - 8am to 8pm
Wednesday, August 1 - 7am to 8pm
Thursday, August 2 - CLOSED
Friday, August 3 - CLOSED
Saturday, August 4 - 8am to 8pm

Freezer Aisle

HOLIDAY WEEKEND PICKS



Totino's
PARTY PIZZAS
All varieties 10.9 oz. **\$3.87**



Ore Ida
FRENCH FRIES
Crinkle - 32 oz., Shoestring - 28 oz. **\$4.63**



Viera's
PORTUGUESE ROLLS
Regular, Mini 18 oz. **\$4.77**



King's Hawaiian
BURGER BUNS 8 pack **\$6.09**



King's Hawaiian
HOT DOG BUNS..... 8 pack **\$6.09**



Euro Class
**BRIOCHE
HAMBURGERS BUNS** 6 pack **\$5.69**



Johnsonville
BRATWURST SAUSAGES **\$6.39**
Original 19 oz.



Mama Lucia
MEATBALLS
Original 30 oz. **\$9.23**

Philly Gourmet
BEEF PATTIES 4 lb. **\$20.69**

Bell & Evans
CHICKEN BURGERS 16 oz. **\$9.29**

Perdue
CHICKEN WINGS
Honey BBQ, Buffalo 30 oz. **\$12.67**

Sea Maz
COOKED SHRIMP **\$29.73**
Peeled/Deveined/Tail On 2 lb.

Seaport
**IMITATION
CRAB MEAT** 1 lb. **\$2.93**

Green Giant
CORN ON COB 12 ear **\$6.09**



FRESH
**BONELESS
RIBEYE STEAK**

\$22.99
LB.

The best
SUMMER
event of the
YEAR

DELI COUNTER MEATS

**ALWAYS
FRESHLY
SLICED**

CAROLINA
LOWER SODIUM SMOKED
TURKEY BREAST **\$7.99**
lb.

HORMEL
SPICED
HAM **\$5.45**
lb.

SARA LEE
LOWER SODIUM
HONEY HAM **\$9.49**
lb.

SARA LEE
HONEY ROASTED
TURKEY BREAST **\$9.99**
lb.

Dairy & Chill

Chobani
GREEK YOGURT **\$1.79**
All varieties 5.3 oz.

Hood
SOUR CREAM **\$2.75**
16 oz.

Kraft
**AMERICAN
CHEESE SLICES** **\$3.45**
8 oz.

Kraft Philadelphia
CREAM CHEESE box **\$2.83**
8 oz.

Tropicana
**PURE PREMIUM
ORANGE JUICE** **\$5.95**
59 oz.

Ball Park
BEEF FRANKS **\$6.65**
Regular, Bun-Length 15 oz.

Oscar Mayer
BEEF FRANKS **\$5.13**
Bun-Length 15 oz.

Oscar Mayer
TURKEY FRANKS **\$3.33**
Bun-Length 16 oz.

Kraft
**SHREDDED
CHEESE**
All varieties
\$3.43
8 oz.

Kraft
DIPS
Creamy Ranch,
French Onion,
Green Onion
\$2.09
8 oz.

**Lindo's
MARKET**

LINDO'S MARKET
4 Watlington Road East, Devonshire
Tel: 236-5623

PHARMACY:
t: 236-7732 f: 236-7922
email: pharmacy@lindos.bm

**Lindo's
FAMILY FOODS**

LINDO'S FAMILY FOODS
128 Middle Road, Warwick
Tel: 236-1344

PHARMACY:
t: 236-0010 f: 236-0009
email: rxd@lindos.bm

Why Go Anyplace Else?

STORE HOURS:
Mon., Tues. & Thurs. 8am to 7pm
Wed., Fri. & Sat. 8am to 8pm

web: www.lindos.bm